

Main CPU, motor control and connectors
 Licenced under CC-BY-NC-SA 4.0

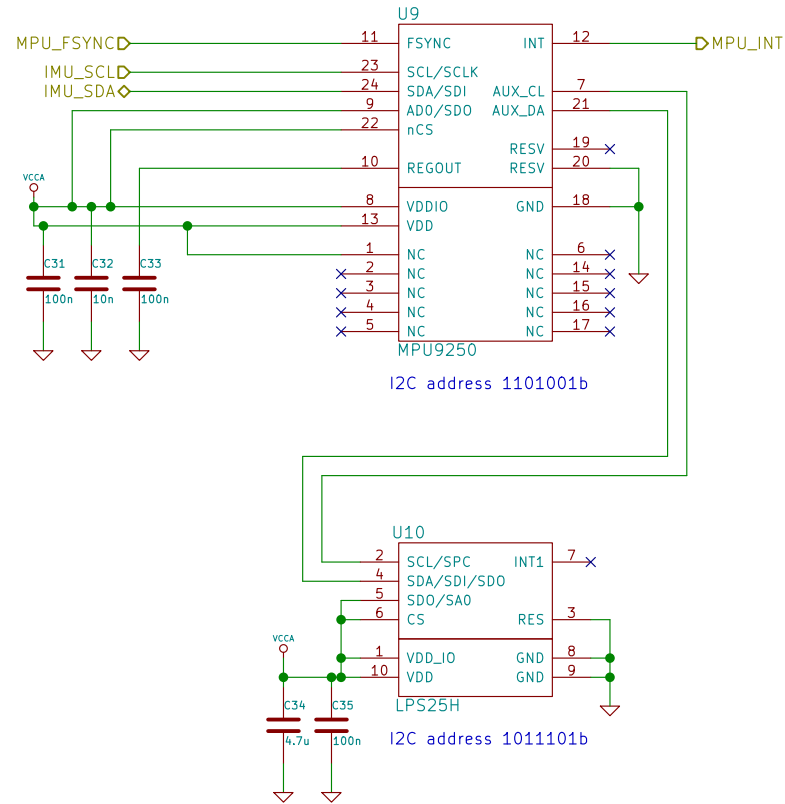


Bitcraze AB
 Sheet: /
 File: tern.sch

Title: Crazyflie 2.0

Size: A4	Date: 20 okt 2014	Rev: Rev.C
KiCad E.D.A. eeschema (2014-03-16 BZR 4752)-product		Id: 1/3

Pin 1 shall be routed in a way that it can be cut
 Cut for 6500 Connected for 9250.
 FSYNC shall not be floating,
 must be set low or high by the MCU



I2C address 1101001b

I2C address 1011101b

IMU sensors
 Licenced under CC-BY-NC-SA 4.0

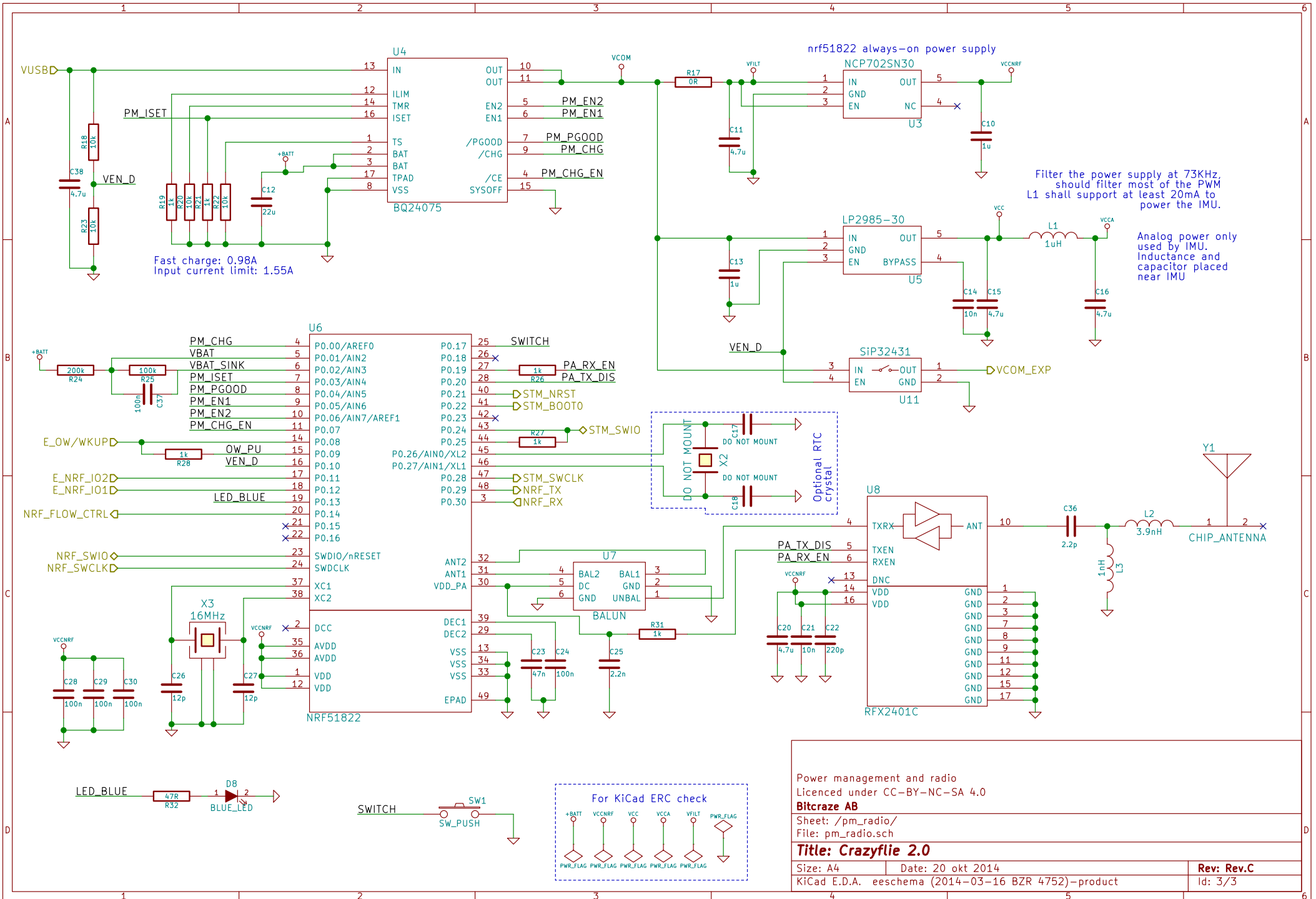
Bitcraze AB

Sheet: /imu/
 File: imu.sch

Title: Crazyflie 2.0

Size: A4 Date: 20 okt 2014
 KiCad E.D.A. eeschema (2014-03-16 BZR 4752)-product

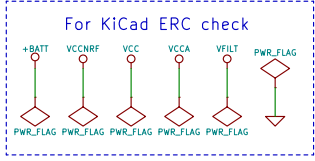
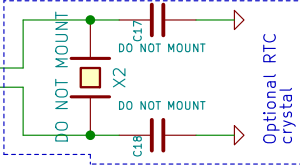
Rev: Rev.C
 Id: 2/3



Fast charge: 0.98A
Input current limit: 1.55A

Filter the power supply at 73KHz,
should filter most of the PWM
L1 shall support at least 20mA to
power the IMU.

Analog power only
used by IMU.
Inductance and
capacitor placed
near IMU



Power management and radio
Licenced under CC-BY-NC-SA 4.0

Bitcraze AB

Sheet: /pm_radio/
File: pm_radio.sch

Title: Crazyflie 2.0

Size: A4 Date: 20 okt 2014
KiCad E.D.A. eeschema (2014-03-16 BZR 4752)-product

Rev: Rev.C
Id: 3/3